

# Strategic Planning & Coordination Experience of Thailand

**Dr. Siriwat Tiptaradol**

Senior Advisor to

National Health Commission

**South-South Learning Workshop to Accelerate Progress to  
End Hunger and Under-nutrition**

Sampran, Rose Garden, Thailand

20 June 2017



# THAILAND at a glance



Population (2015)	67,959,000 million
Area	513,115 sq. km
Population	65 m
Pop. Density (2016)	133.4
GDP / Capita (2015)	US\$ 16,081
Life expectancy at birth m/f (2015)	72/78
Infant mortality rate per 1000 live births (2010-2015)	11
Total expenditure on health as % of GDP (2014)	6.5
Administrative Governance:	Central Administration (Ministry) Provincial Administration (Province & District) Local Administration (Municipality, Provincial Administrative Org. Sub-district Administrative Org)

Source: WHO, UNDP

# Geopolitics & Governance

Thailand is highly centralized kingdom.

- 76 Provincial Governors are appointed by Ministry of Interior.
- Bangkok Metropolitan Administration (BMA) first elected Governor in 1975.
- Pattaya City elected Governor in 1978
- National Economic Development Council (NEDC) established in 1950
- National Economic & Social Development Board (NESDB) in 1972



# Major Nutrition Problems in the Past

(During WW II to 1970)



1. Protein Calorie Malnutrition  
esp. children < 5
2. Vitamin Deficiency  
eg. Vitamin A, B, B2
3. Iodine Deficiency Disease (IDD)
4. Iron Deficiency Anemia  
esp. pregnant women, children
5. Bladder Stone in  
North-Eastern Region



# Root Causes of Malnutrition

1. Poverty
2. Traditional Belief & Behavior
3. Lack of Knowledge & Info
4. Environment  
(certain area eg., mountainous area)
5. Etc



## National Nutrition Survey

1<sup>st</sup> Survey in 1960

2<sup>nd</sup> Survey in 1975

## Nutrition Program in Rural Area (1960 - 1970)

Applied Nutrition Project (ANP) of FAO, WHO, , UNICEF

- Protein Food Development Project
- Infant formula &  
Young Child Food Supplement
- Child Nutrition Center
- Nutrition Education
- Iodine Salt
- Food & Nutrition Laboratory





การสำรวจภาวะโภชนาการครั้งที่ 1







การสำรวจภาวะโภชนาการครั้งที่ 1







การวัดส่วนสูงเพื่อหาภาวะโภชนาการ





การสำรวจการบริโภคอาหาร





**The 1<sup>st</sup> National Food & Nutrition Plan**  
(Under the National SE Development Plan)

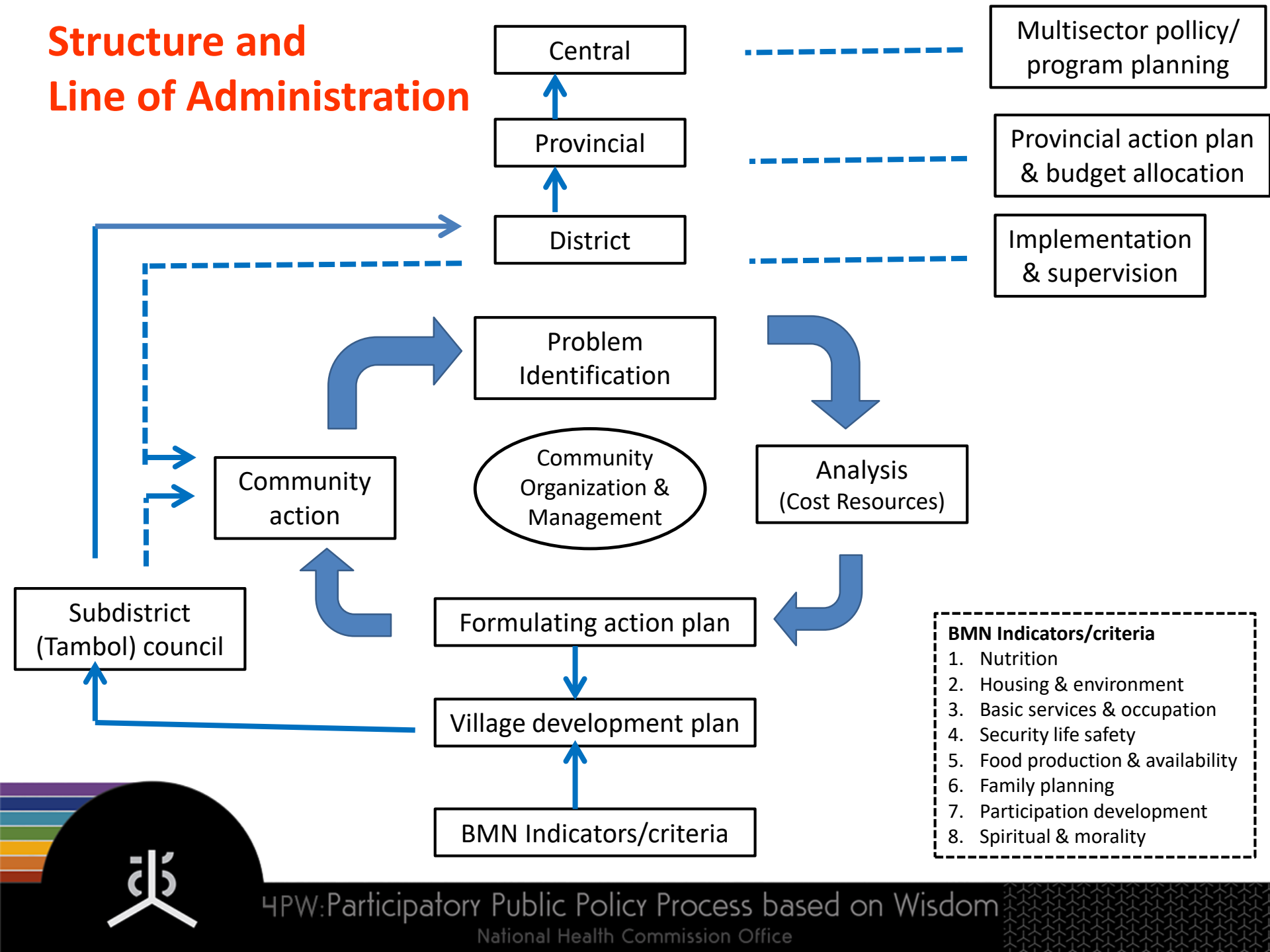
**The 3<sup>rd</sup> National Food & Nutrition Plan**  
(Under the National Campaign for Quality of Life - QOL)



- From National strategic **planning** and coordination to area **implementation**
- **Multisectoral** planning and coordination of economic, agriculture, public health, education, social development, research & training sectors



# Structure and Line of Administration







กิจกรรมผลิตอาหารเสริมข้าว ถั่ว งา ในชุมชนโดยกลุ่มแม่บ้าน







เครื่องผลิตอาหารเสริมประเภทข้าว ถั่ว งา แบบง่าย ๆ ที่ใช้ในชุมชน





กองทุนหมู่บ้าน จุดสนับสนุนอาหารเสริมข้าว ถั่ว งา แก่เด็กวัยก่อนเรียน





กิจกรรมการกระจายอาหารเสริมข้าว ถั่ว งา แก่เด็กวัยก่อนเรียนในชุมชน







กิจกรรมการจัดเลี้ยงอาหารแก่เด็กวัยก่อนเรียน  
ซึ่งจัดทำโดยอาสาสมัครในหมู่บ้านและชุมชน





กิจกรรมแม่ให้อาหารลูกในสถานจัดเลี้ยง





เจ้าหน้าที่สาธารณสุขให้โภชนศึกษาแก่แม่เด็ก







ตัวอย่างสื่อและเอกสารเผยแพร่จากงานโภชนาการ





ตัวอย่างสื่อและเอกสารเผยแพร่งานโภชนาการ

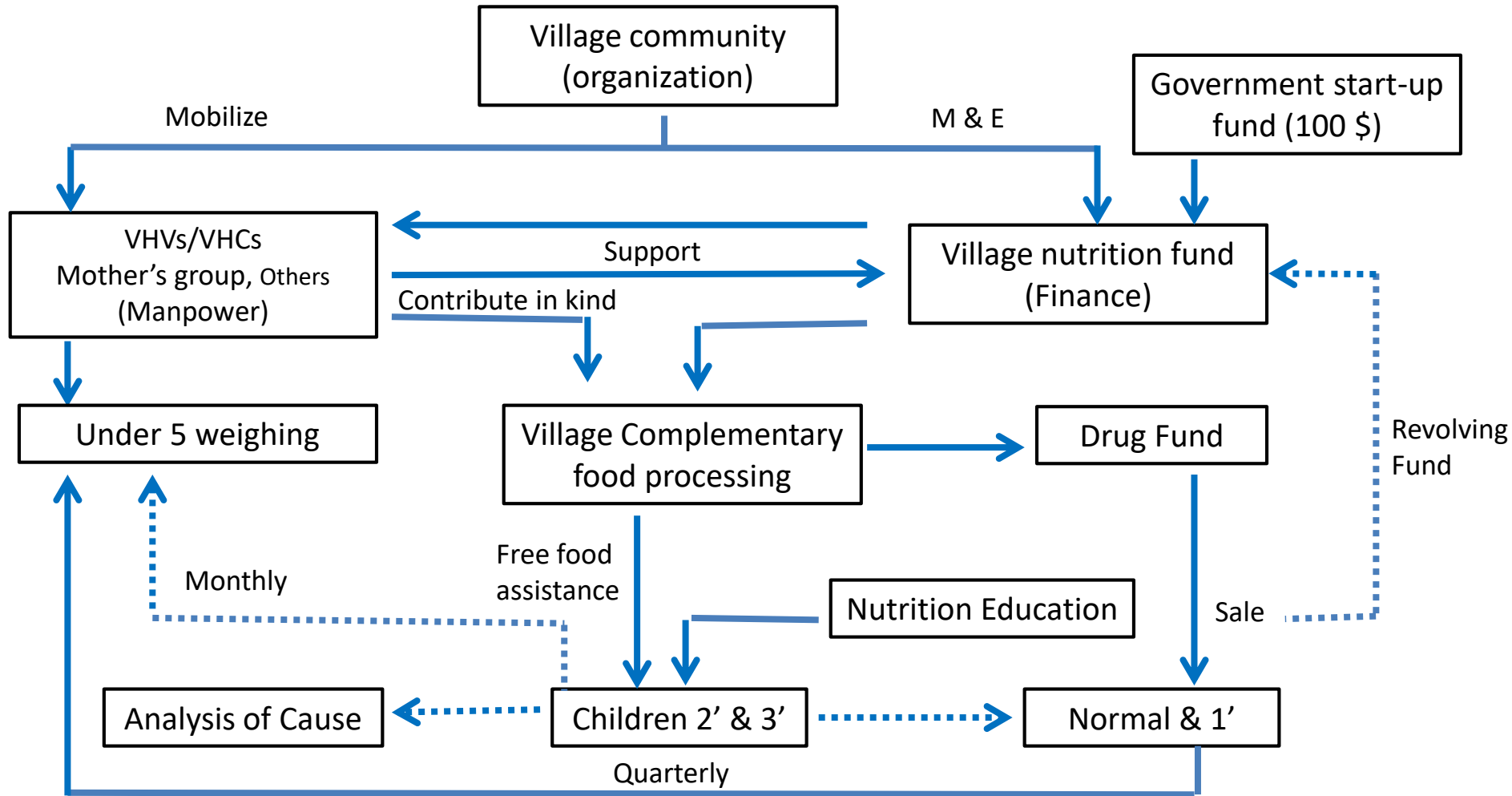




ตัวอย่างสื่อและเอกสารเผยแพร่งานโภชนาการ



# Nutrition in Community Model of PHC

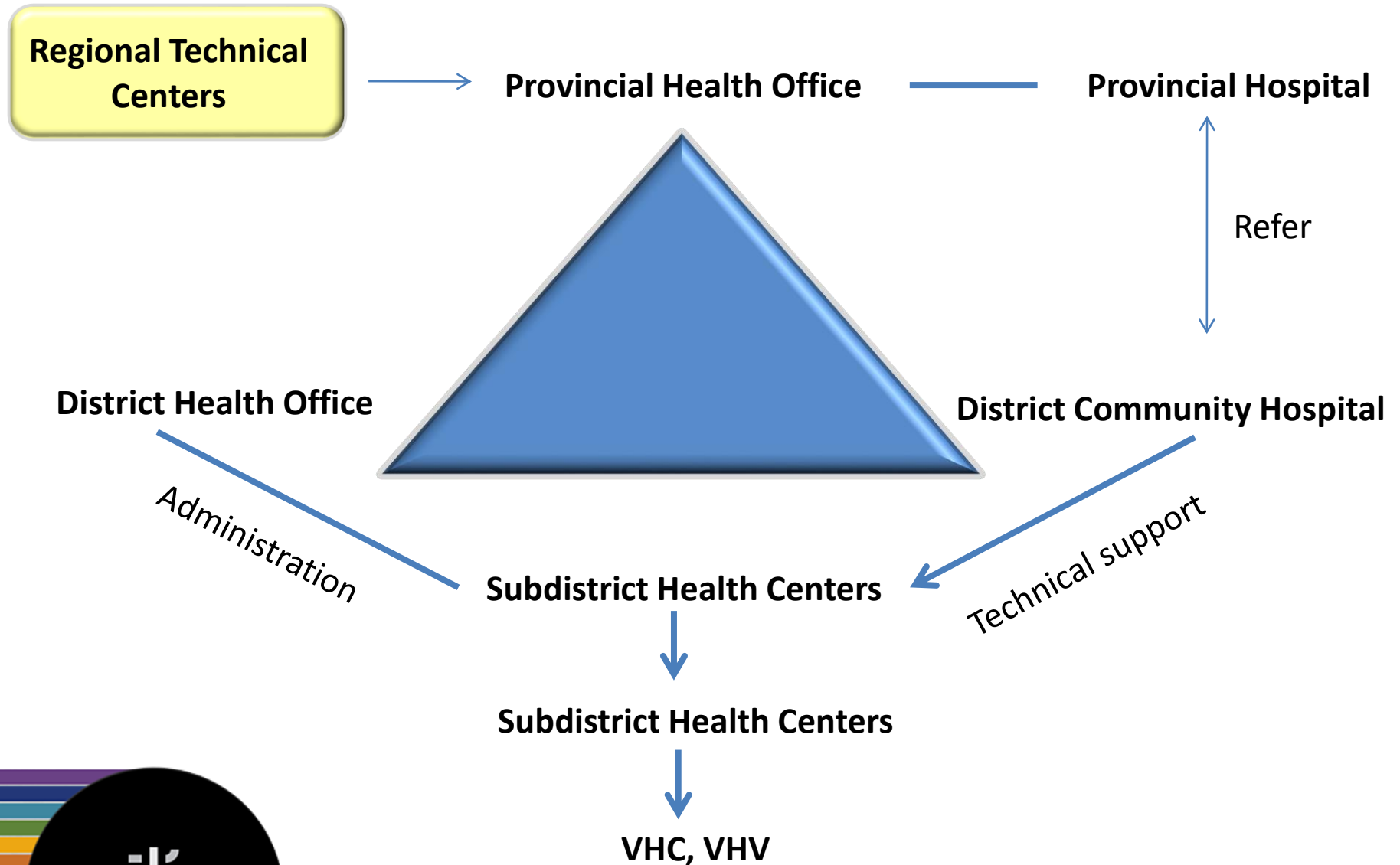


Individual level  
Actor = mothers/caretakers  
Supporter = VHVs

Community level  
Actor/mobilizer = VHVs  
Facilitator = health personnel



# Provincial Health Infrastructure



# Enabling Factors

- Clear top-down policy and vision of HFA2000
- Clear targets
- Multisectoral coordination from top level to operation field
- Good strategies of BMN and QOL
- Good health infrastructure from central to district level
- Fair budget
- Strong and consistent monitoring and evaluation





# Incurring Problems

1976 – 1980

Political fighting  
against communists  
in some rural areas

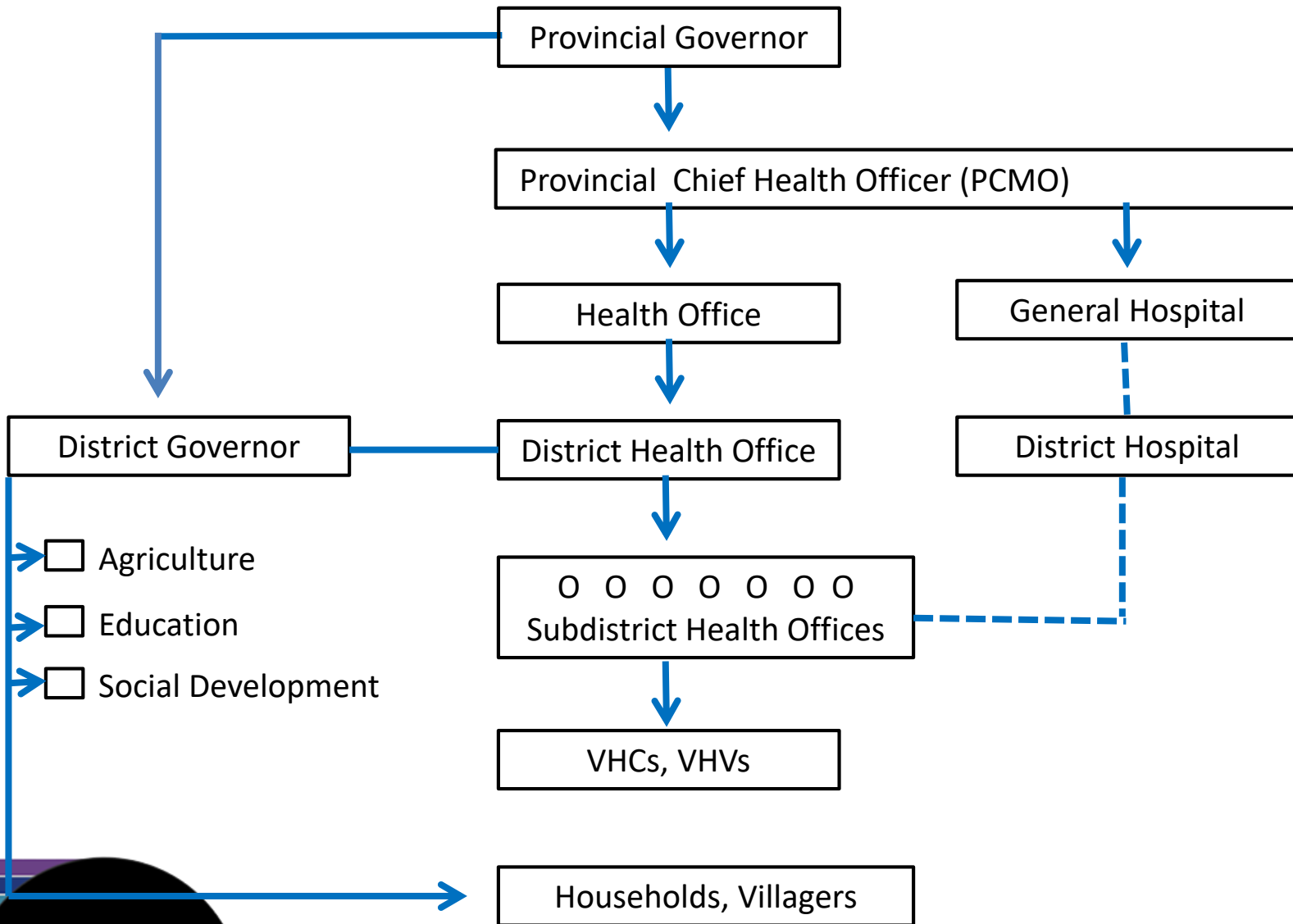


1981 – 1987

Economic  
slowdown



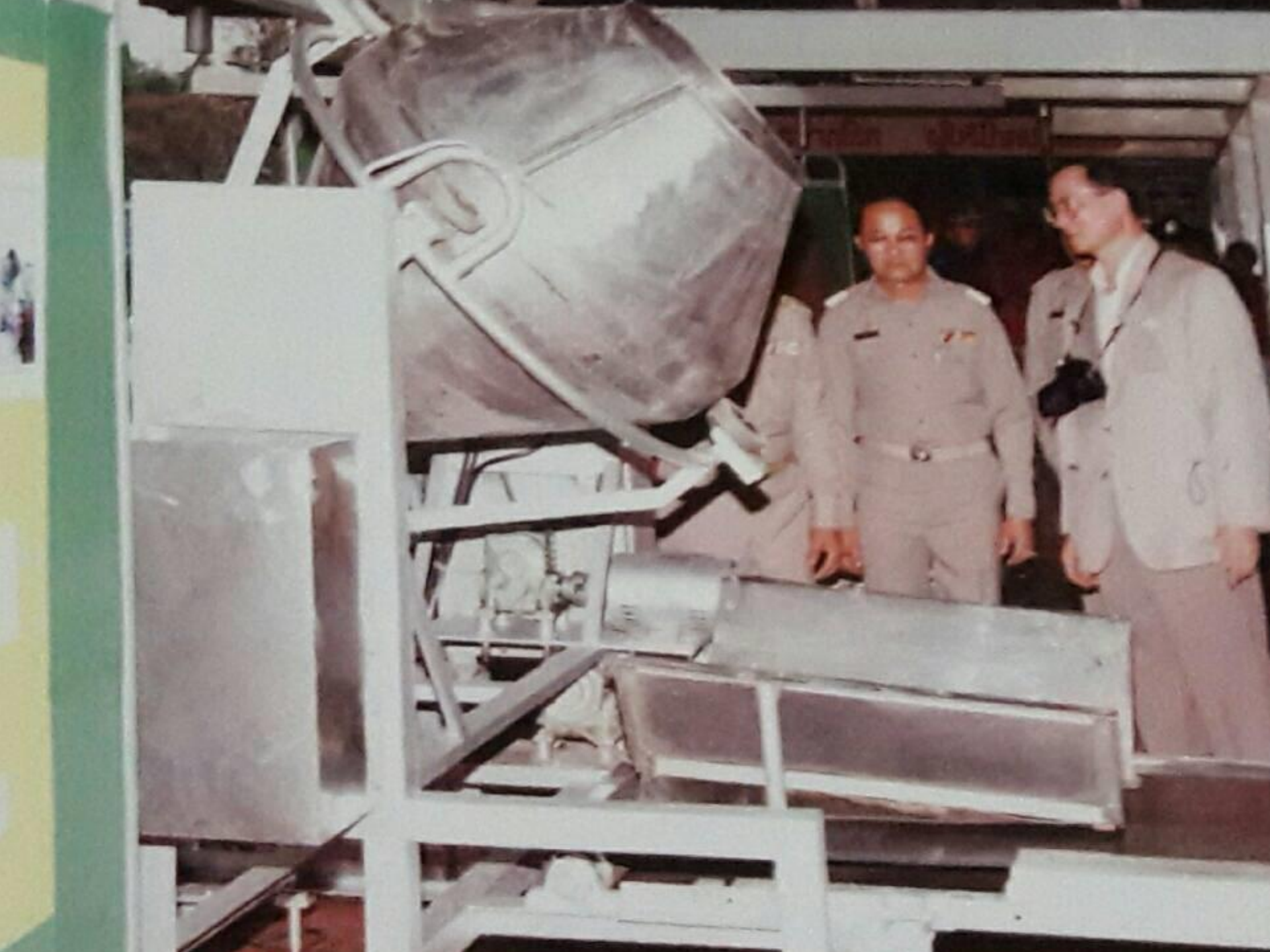
# Provincial Governance Structure



# **IDD Program**

**From goiter to Subclinical deficiency  
in certain groups  
and specific areas**











4PW: Participatory Public Policy Process based on Wisdom  
National Health Commission Office





4PW: Participatory Public Policy Process based on Wisdom  
National Health Commission Office







4PW: Participatory Public Policy Process based on Wisdom  
National Health Commission Office



4PW: Participatory Public Policy Process based on Wisdom  
National Health Commission Office

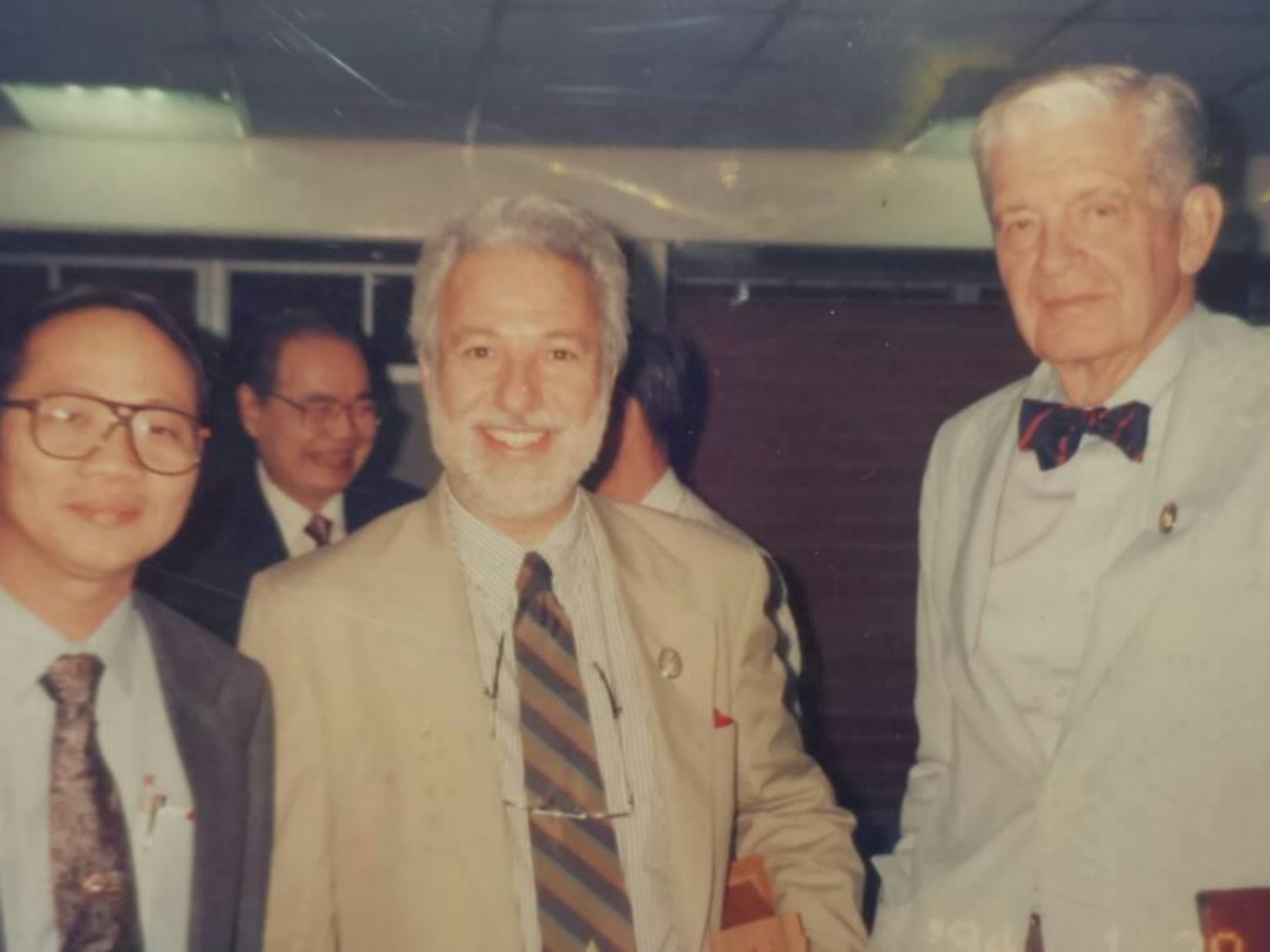




4PW: Participatory Public Policy Process based on Wisdom  
National Health Commission Office









4PW: Participatory Public Policy Process based on Wisdom  
National Health Commission Office

# **Breastfeeding Promotion Baby Friendly Hospital Initiative (BFHI)**













4PW: Participatory Public Policy Process based on Wisdom  
National Health Commission Office



4PW: Participatory Public Policy Process based on Wisdom  
National Health Commission Office



4PW: Participatory Public Policy Process based on Wisdom  
National Health Commission Office





4PW: Participatory Public Policy Process based on Wisdom  
National Health Commission Office

# References

1. Heaver, R., Kachondam, Y. Thailand National Nutrition Program, Lessons in Management and Capacity Development, The International Bank for Reconstruction and Development/ The World Bank. 2002
2. Winichagoon, P., Y. Kachondam; G. Attig; K. Tontisirin. Integrating Food and Nutrition into Development: Thailand's Experiences and Future Visions. UNICEF/EAPRO, New York and Institution, Mahidol University, Bangkok. 1992.
3. Winichagoon P. Scaling up a community-based program for maternal and child nutrition in Thailand. Food and Nutrition, vol. 35, no. 2 ©2014 (supplement)
4. Sinawat S.et al. 60 years of Nutrition Development in Thailand. Division of Nutrition, Development of Health, Ministry of Public Health, 2002





**THANK YOU  
FOR YOUR ATTENTION**

#52212043

